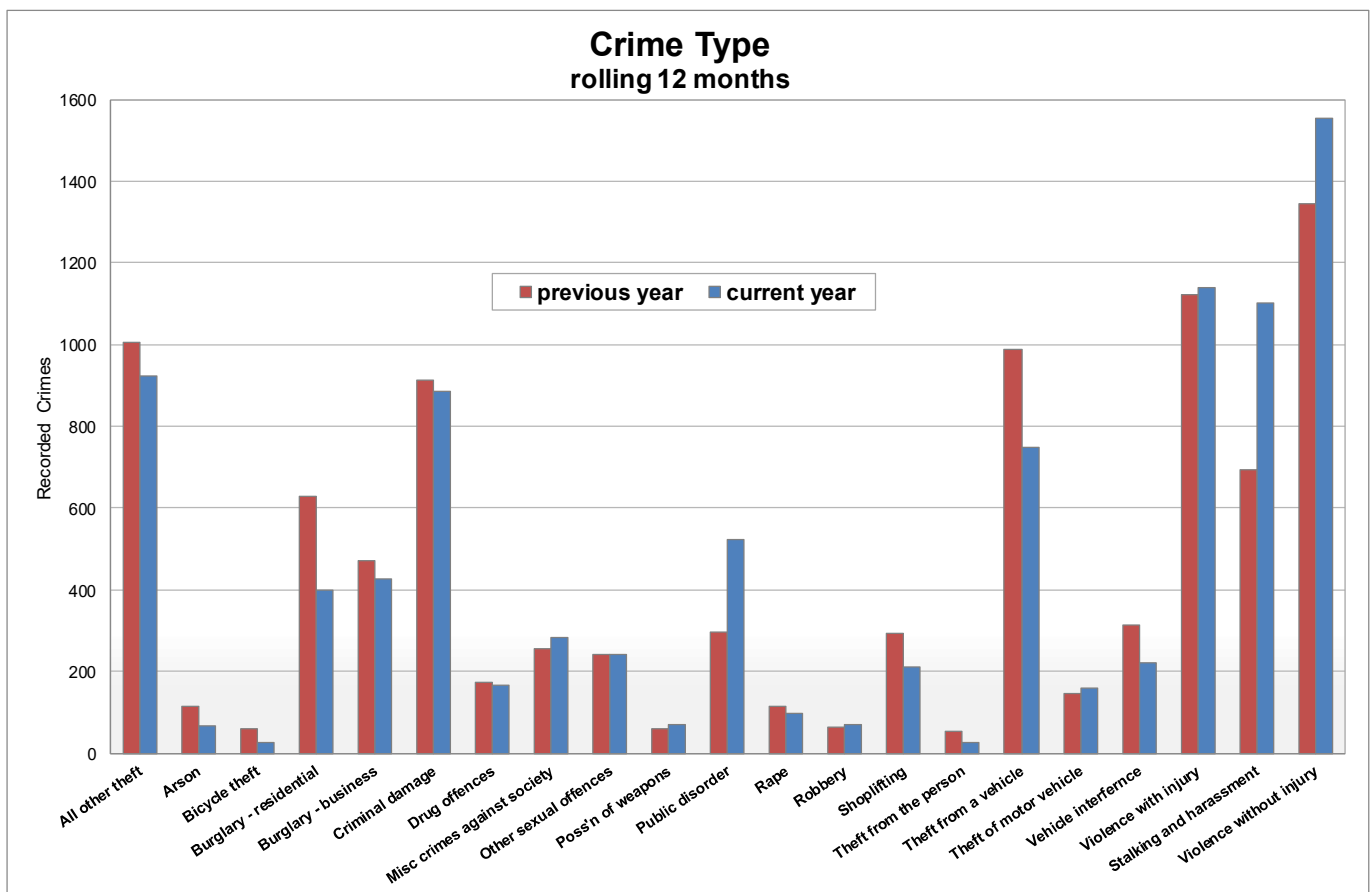




Daventry District and South Northamptonshire Community Safety Partnership Performance Report; first quarter 2020/21

The pandemic has had an impact on the crime figures for the first quarter of the year. The lockdown put more people in their homes, reducing opportunity for burglary in dwellings; most business were closed and the shops which were open had fewer people in them, making shoplifting more difficult. Restricted movements on foot and by car made those who were out and about more obvious, and this increased the number of drug arrests. The closure of pubs and clubs reduced the serious violence associated with the night-time economy and meant more officers were deployed across the working week, with an improvement in response times.

The chart below shows numbers for each of the crime groups recorded by Northamptonshire Police: data for the twelve months to June 2019 is shown in red, while the figures for the current year to June 2020 are in blue.



The overall picture is positive with decreases in the majority of categories, which translates into a 2.4% reduction in crime from the year-end. Violent offences are the notable exception and are discussed in the next section of this report.

Public disorder offences rose from 295 to 513 but many of these are attributable to COVID breaches, with 186 of these offences recorded in the last three months.

Miscellaneous crimes against society rose from 256 to 282, an increase of 10.2%. Amongst its miscellany, this category includes crimes under the Offender Management Act and 69 such offences were recorded in the ward of Barby & Kilsby, which contains HMP Onley, HMP Rye Hill

and Rainsbrook Secure Training facility. However, 98 of the offences were *obscene publications* and these were recorded across the partnership area. As absolute numbers these are not of great concern, but we will continue to monitor the matter.

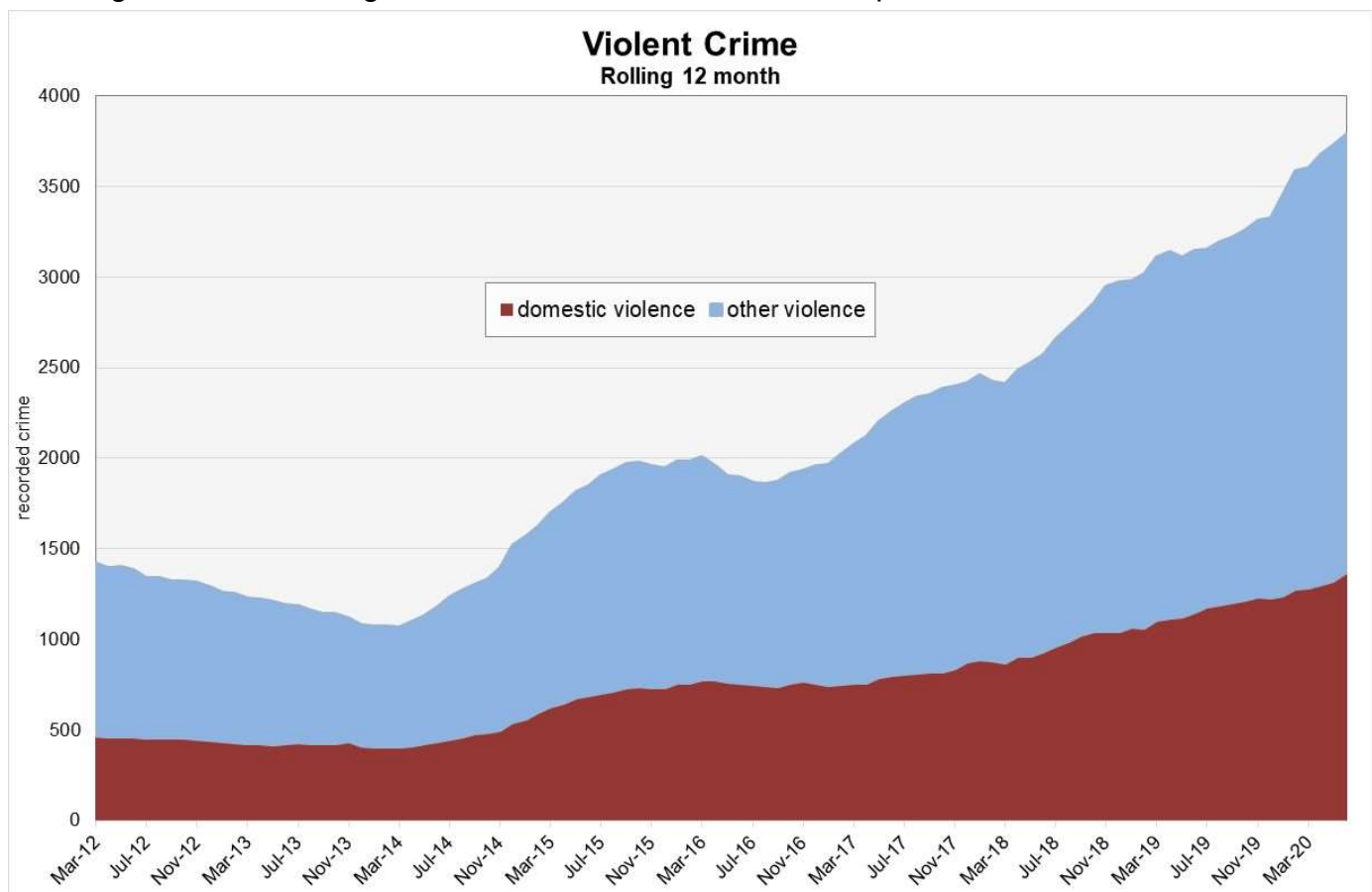
Arson offences continue to fall but Operation Unite is ongoing in Daventry, where the majority of the offences previously took place: 70 offences were recorded across the Partnership during the 12 months to the end of June, with just 28 of them occurring in Daventry.

All other theft is a significant feature of the chart, however numbers have decreased in each of the last two years and fell by a further 7.8% in the first quarter of 2020/21. The category contains nine crime types, although most of them return very low numbers: 923 crimes have been recorded and the only significant numbers were for *theft (other)* which recorded 679 offences; this covers a range of matters, such as theft of farm gates and other metal items, garden furniture and building materials. The second highest numbers were for *making off without payment*, which recorded 87 offences.

In 2019/20 *theft from a vehicle* decreased for the first time in four years and figures for the first quarter show a further reduction of 13.4% from that baseline. Numbers have been reducing as a result of Police operations to target thefts from goods vehicles. For *theft of a vehicle* the figures are up 9.8% compared to the 12 months to June 2019, but are down 7.1% from the year-end baseline. Numbers for this crime type are low, with 157 offences recorded in the last 12 months.

Violence and Domestic Violence

With the majority of other crime types reducing it is unsurprising that *violent crime* now accounts for 40.6% of the crime recorded in the area. Recorded violent offences for the year to June have risen by 8.1% in Daventry District, while in South Northamptonshire they have risen by 0.9%; these figures combine to give a rise of 5.1% for the Partnership as a whole.



Violent crime breaks down as 30% *without injury*, 41% *with injury* and 29% *stalking and harassment*, with similar proportions being returned for offences with and without a domestic flag. This demonstrates that *stalking and harassment* is now an important factor in the overall

figures and any rise in it is significant: *with injury* offences have fallen by 2.0% from the year-end, *without injury* offences have risen by 4.8%, but offences of *stalking and harassment* have increased by 14.2% from the year-end, following a rise of 53.3% in 2019/20.

Examining *violence with injury* more closely: the vast majority (1,102), were *assault with injury*; of the more serious offences there were 52 of *wounding/assault with intent*, four *attempted murder* and five of *endangering life*.

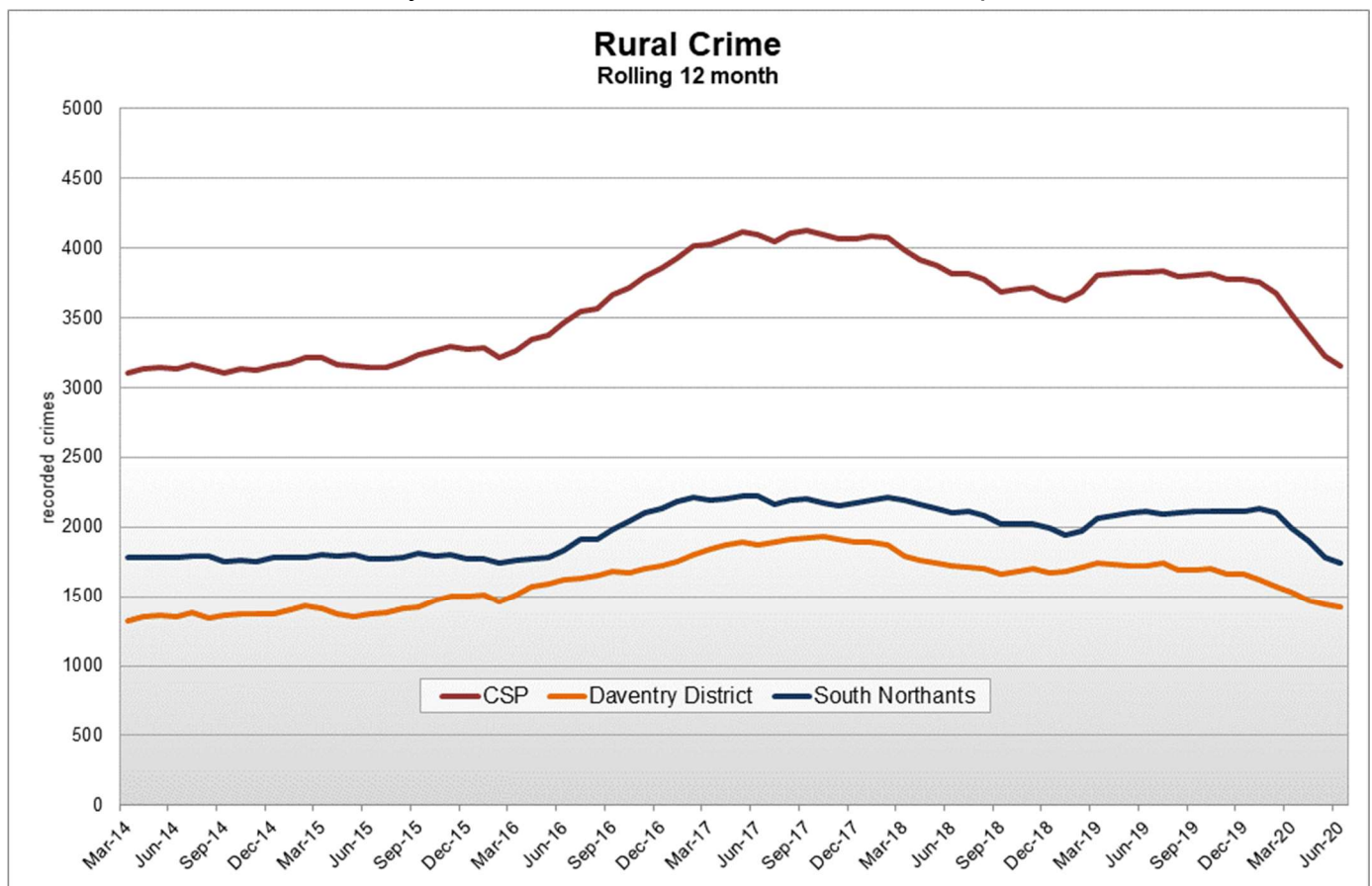
Domestic violence accounts for 36.3% of all violent crime and offences rose by 6.8% in the first quarter. As with the overall violence figures we see a split between the two districts; numbers in Daventry District increased by 10.8%, while in South Northamptonshire they rose by 2.0%.

For domestic crimes other than violence, figures have increased by 4.2%. This category includes a range of offences, from criminal damage up to serious offences such as rape: 31 of the 98 recorded rape offences had a domestic flag, which is a significant proportion of the total.

Domestic incidents (non-crimes) are down by 0.1%, following a fall of 62.4% in 2019/20.

Rural Crime

Rural crimes have fallen by 10.4% for the Partnership so far this year; this breaks down as a decrease of 7.7% in Daventry District and of 12.5% in South Northamptonshire.



The Partnership previously ran a rural crime group for Daventry District and South Northamptonshire but in 2018/19 we merged with the countywide Police tasking meeting to form one body that covers the whole county. There is good engagement from partners: ACRE, the Country Land and Business Association, the Farming Community Network, the British Trust for Shooting and Conservation and the National Farmers Union all attend. These partners are very engaged in the work of the group and are valuable in getting messages to and from their members and in working with us on the days of action and engagement events.

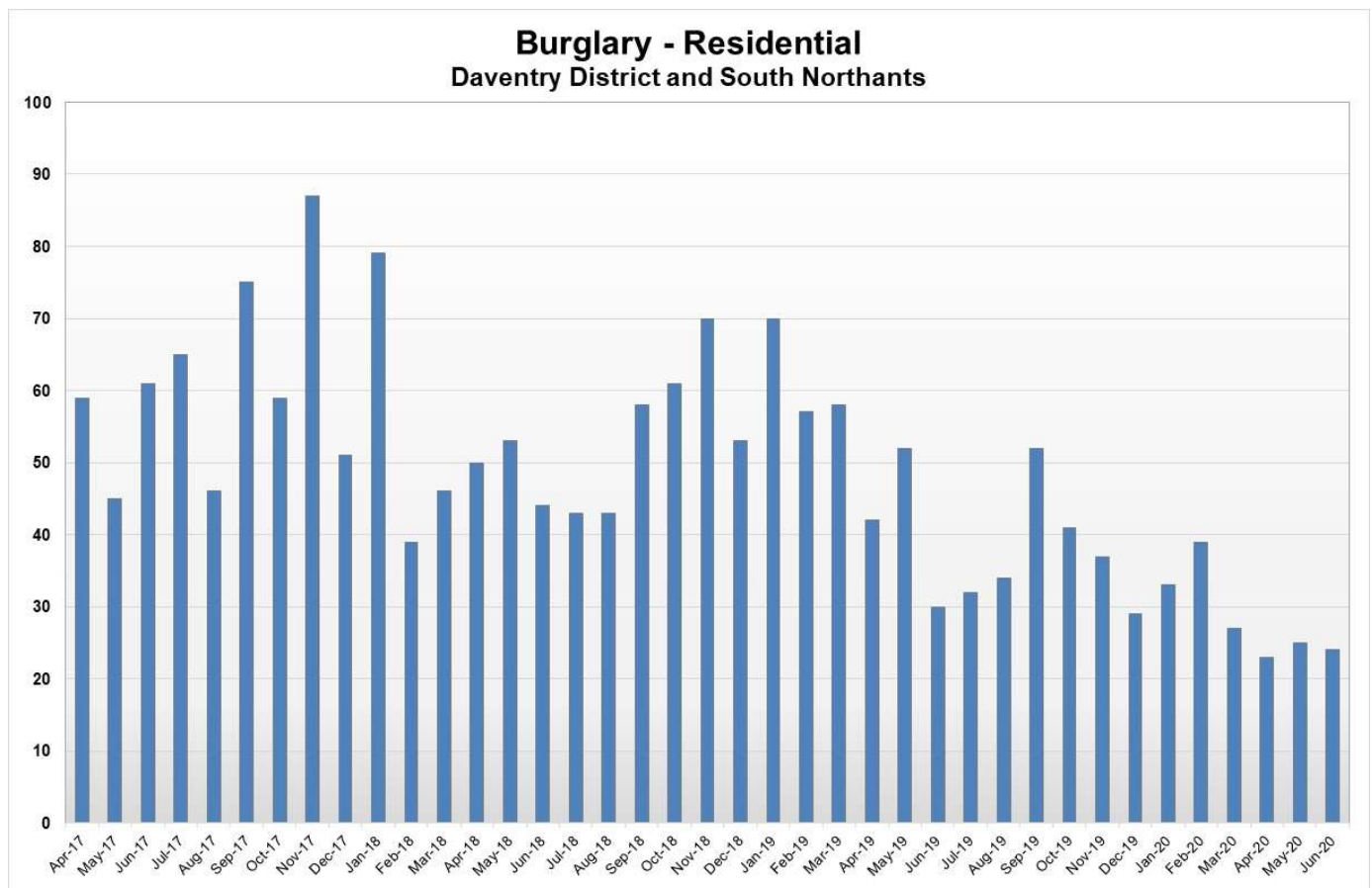
Anti-social behaviour

Incidents of anti-social behaviour recorded by Northamptonshire Police rose by 44.4% in the first quarter: most breaches of the COVID regulations have been recorded as anti-social behaviour offences and it is this which has been the driver behind the increase.

A secondary measure for anti-social behaviour is criminal damage and figures for the Partnership decreased by 3.5% in the first three months of 2020/21.

Burglary

The total number of burglaries recorded in the twelve months to the end of June was 814, which is a decrease of 10.4% from the year-end figure: this breaks down as 418 offences of *burglary business/community* and 396 offences of *burglary residential*: *burglary residential* fell 11.6% from the baseline, while *burglary business/community* fell by 9.1%.



The drop in *burglary residential* occurred across Northamptonshire and, while the lockdown has obviously had an effect, it should be noted that this type of crime reduced by 32.0% in 2019/20 as the result of a Police initiative devoting more resources to its investigation.

Data by ward

On the following pages are tables which show the crime figures recorded by Northamptonshire Police for each ward in the two districts. For each crime type the first column shows the current twelve month total and the second column is the figure twelve months ago. Please note that these may not reflect the reductions quoted above, as those are from the year-end figure.

Offences within HMP Onley, HMP Rye Hill and Rainsbrook Secure Training facility are the significant factor in the high rate of violent crime recorded in Barby & Kilsby ward, where they are located: they are also responsible for the high numbers within *miscellaneous crimes against society*, as this category includes prison offences under the offender management act.

South Northamptonshire

From	To	All other theft		Arson		Bicycle theft		Burglary		Criminal damage		Drug offences		Misc crimes		Poss'n of weapons		Public disorder		Robbery Business		Robbery Personal		Sexual offences inc Rape		Shoplifting		Theft from the person		Theft from vehicle		Theft of motor vehicle		Vehicle intrfrnce		Violence		Total		
		current	prev	current	prev	current	prev	current	prev	current	prev	current	prev	current	prev	current	prev	current	prev	current	prev	current	prev	current	prev	current	prev	current	prev	current	prev	current	prev	current	prev	current	prev			
Astell	Jun-20	13	5	3	0	0	0	8	6	8	7	3	2	4	0	1	0	4	1	0	0	0	0	2	5	0	0	0	0	17	20	2	1	0	8	15	17	80	72	
Blakesley & Cote		10	8	0	0	1	1	24	38	5	8	3	2	2	5	1	0	2	4	1	0	0	0	4	4	0	0	0	0	8	19	5	4	2	6	37	34	105	133	
Blisworth & Roade		42	45	4	3	1	0	27	40	30	19	6	9	4	6	2	5	19	5	1	1	4	0	8	7	6	4	0	0	21	34	7	5	6	7	117	76	305	266	
Brackley East		25	41	4	2	1	1	29	32	23	21	8	1	1	3	0	0	11	5	0	0	0	1	7	7	13	9	0	1	21	28	4	4	11	6	84	73	242	235	
Brackley South		36	20	0	1	1	0	13	11	16	20	4	5	5	2	1	0	18	8	0	1	2	2	8	11	12	44	2	2	9	11	1	1	3	2	98	78	229	219	
Brackley West		7	7	0	0	0	0	9	10	13	3	1	1	4	1	0	0	7	4	0	0	1	0	3	5	3	7	1	0	9	0	1	0	2	0	43	34	104	72	
Brafield & Yardley		10	28	3	1	1	1	16	49	12	15	3	0	6	0	2	0	10	7	0	0	0	2	11	6	0	0	0	0	11	13	3	5	1	5	41	42	130	174	
Cosgrove & Grafton		9	12	0	0	1	2	7	16	3	14	1	1	1	3	1	0	2	1	0	0	0	0	3	9	0	0	0	0	13	12	1	0	4	0	44	63	90	133	
Danvers & Wardoun		21	23	0	0	0	0	20	19	7	11	1	0	2	0	0	2	2	0	0	1	0	2	0	0	0	0	0	10	6	5	4	1	4	22	36	94	105		
Deanshanger		9	9	2	0	1	4	11	14	11	30	1	0	6	2	0	2	17	13	0	0	1	0	9	5	6	6	0	1	9	8	2	4	14	5	74	76	173	179	
Grange Park		70	60	0	0	0	2	13	28	16	19	3	4	6	11	1	1	3	5	0	0	3	3	5	6	8	4	0	3	35	33	4	2	6	11	98	76	271	268	
Hackleton		15	8	0	1	1	8	16	25	5	8	1	0	1	1	2	0	3	7	0	1	0	0	12	6	0	0	0	0	10	10	0	2	3	3	42	35	111	115	
Harpole & Grange		26	49	1	1	3	1	19	33	26	30	2	6	9	6	6	2	15	2	1	2	3	1	9	9	0	4	0	1	67	98	10	6	11	28	89	46	297	325	
Heyfords & Bugbrooke		22	22	0	1	1	0	10	23	25	14	4	2	4	3	1	1	7	8	0	0	0	0	8	14	3	1	1	0	6	10	2	2	4	0	59	92	157	193	
Kings Sutton		3	4	0	1	0	0	4	6	2	4	0	1	3	3	0	0	7	4	0	0	1	0	3	4	4	0	0	1	2	0	1	1	1	1	37	30	66	61	
Kingthorn		4	0	1	0	0	0	2	2	3	6	0	0	1	0	0	0	2	1	0	0	0	1	2	2	0	0	1	0	2	1	1	0	1	1	18	19	38	33	
Little Brook		12	9	1	0	0	0	7	5	4	6	1	2	1	1	0	1	3	2	2	0	0	0	1	3	3	0	0	0	22	32	1	1	3	3	17	16	78	81	
Middleton Cheney		10	8	3	1	0	1	8	8	26	16	3	2	6	7	0	0	7	5	0	0	1	3	18	3	6	2	0	1	1	7	2	4	1	7	82	60	174	135	
Old Stratford		7	5	1	0	1	0	9	2	8	8	3	1	1	0	2	0	3	2	0	0	1	0	5	1	0	0	0	0	10	11	6	4	4	4	53	22	114	60	
Salcey		3	1	2	3	0	1	6	18	16	8	1	0	2	1	0	1	2	5	0	0	1	0	4	2	0	0	0	2	10	5	3	1	2	39	29	84	84		
Silverstone		25	16	0	0	0	0	8	7	15	3	4	4	4	0	1	0	9	7	0	0	1	2	5	4	0	0	1	3	13	21	3	1	0	1	61	40	150	109	
Steane		3	7	0	1	0	0	17	14	9	2	0	1	0	1	2	0	1	2	0	0	0	0	1	5	0	0	0	0	8	3	1	2	1	1	24	30	67	69	
Tove		11	14	0	0	0	0	15	15	8	15	1	0	4	1	0	0	3	1	0	0	0	0	0	2	0	1	0	0	4	7	1	2	1	0	0	36	20	84	78
Towcester Brook		17	10	0	0	2	1	19	23	27	31	5	3	4	2	1	1	13	10	0	1	0	5	6	6	2	1	0	1	22	18	3	2	8	6	126	101	255	222	
Towcester Mill		59	92	1	6	0	5	25	35	42	44	7	7	1	3	1	3	35	20	0	2	1	1	9	8	29	25	2	3	36	85	10	4	8	20	130	139	396	502	
Washington		7	6	0	0	0	0	6	2	7	1	0	0	0	0	1	0	1	0	0	1	1	0	1	1	0	0	0	2	11	2	1	1	0	5	10	34	33		
Whittlewood		15	7	0	0	0	1	7	26	14	9	0	1	3	5	0	1	3	2	0	0	0	1	4	4	1	1	0	0	4	6	2	3	2	4	29	34	84	105	
Total		491	516	26	22	15	29	355	507	381	372	66	55	85	67	26	18	209	133	5	9	22	22	150	139	96	109	8	16	373	516	84	68	100	135	1520	1328	4012	4061	

Daventry District

From	To	All other theft		Arson		Bicycle theft		Burglary		Criminal damage		Drug offences		Misc crimes		Poss'n of weapons		Public disorder		Robbery Business		Robbery Personal		Sexual offences inc Rape		Shoplifting		Theft from the person		Theft from vehicle		Theft of motor vehicle		Vehicle intrfrnce		Violence		Total	
		current	prev	current	prev	current	prev	current	prev	current	prev	current	prev	current	prev	current	prev	current	prev	current	prev	current	prev	current	prev	current	prev	current	prev	current	prev	current	prev	current	prev	current	prev		
Abbey North	Jun-20	40	26	5	7	2	3	27	56	83	72	12	21	19	19	11	6	57	23	1	2	7	3	19	32	5	12	1	2	22	29	6	6	9	10	337	277	663	606
Abbey South		61	71	5	22	1	4	30	23	41	82	16	17	16	14	6	9	45	37	0	0	6	6	21	22	66	125	9	19	26	15	7	9	1	4	196	218	553	697
Badby		11	11	1	2	0	0	17	24	14	8	2	1	2	3	0	0	2	0	0	0	1	0	2	2	0	0	0	1	12	10	4	2	6	3	27	18	101	85
Barby & Kilsby		21	26	8	19	0	1	20	26	19	15	6	19	65	64	5	0	20	11	0	1	2	1	17	25	0	0	0	0	38	27	2	4	11	10	273	250	507	499
Boughton & Pitsford		4	13	0	0	0	0	14	24	10	5	1	2	1	1	0	0	2	2	0	0	0	0	2	3	1	0	0	0	8	23	3	3	6	4	54	23	106	103
Brampton		17	16	0	1	0	0	22	30	10	12	4	0	3	1	0	2	3	2	0	1	1	0	6	7	3	2	1	2	6	4	1	2	4	11	58	42	139	135
Braunston		4	4	0	1	1	3	17	16	7	7	0	1	2	1	0	0	4	0	0	0	0	0	2	3	0	0	0	1	5	3	3	3	3	1	34	21	82	65
Brixworth		12	18	1	1	1	2	31	43	24	16	0	6	5	6	0	2	7	8	0	0	0	1	10	11	7	3	2	0	19	20	4	3	8	10	107	88	238	238
Byfield		12	11	0	1	0	1	23	8	10	6	0	0	2	5	1	0	8	0	0	0	0	1	1	2	3	0	0	1	10	9	0	1	2	6	28	15	100	67
Clipston		14	42	0	1	0	0	11	26	13	14	7	7	3	2	0	1	3	1	0	1	1	0	2	5	0	0	2	1	16	61	2	4	2	7	21	17	97	190
Crick		20	16	0	4	0	1	14	19	18	11	5	2	6	4	1	1	11	5	1	1	0	1	5	6	1	2	0	1	30	26	2	5	5	14	58	36	177	155
Drayton		22	31	4	10	0	3	26	37	42	53	6	5	11	10	4	2	12	6	0	0	4	0	22	15	1	4	0	1	24	29	7	4	4	14	154	128	343	352
Flore		10	13	0	0	0	0	16	18	9	8	6	2	3	1	1	0	1	0	0	0	0	0	3	6	0	1	0	1	12	16	4	3	7	5	27	33	99	107
Hill		39	18	13	15	3	2	22	33	69	44	11	15	13	18	3	9	32	20	2	0	4	3	24	20	2	5	1	3	19	46	8	3	9	13	251	219	525	486
Long Buckby		30	33	0	3	0	2	21	31	20	57	5	7	11	4	4	1	34	11	1	1	0	2	5	11	10	14	0	2	34	42	4	6	11	29	151	84	341	340
Moulton		36	44	1	4	2	6	46	42	23	44	5	4	9	8	2	5	16	13	0	0	3	2	10	13	7	5	1	0	19	18	2	5	4	8	105	99	291	320
Ravensthorpe		10	10	0	0	0	1	10	9	7	1	0	1	1	0	0	0	2	0	0	0	0	0	2	1	0	0	0	0	3	2	1	0	3	0	18	20	57	45
Spratton		8	4	1	0	0	0	13	28	11	9	1	0	1	2	0	0	11	2	1	0	3	1	6	2	0	0	0	0	5	9	3	5	0	4	58	24	122	90
Walgrave		11	12	0	1	0	1	5	17	8	16	3	2	3	1	0	0	3	4	0	0	2	1	7	0	0	0	0	1	9	5	2	3	3	0	24	20	80	84
Weedon		15	28	1	0	0	0	21	13	24	31	4	2	8	6	2	3	15	8	0	0	0	0	8	7	6	7	0	1	14	21	3	1	9	8	87	69	217	205
Welford		7	10	2	2	0	0	14	28	6	6	0	0	4	2	0	0	4	3	1	1	0	0	3	2	1	0	0	1	9	9	0	2	7	3	44	13	102	82
W Haddon & Guilsboro		5	6	0	0	1	0	19	10	5	6	0	3	4	15	0	0	8	5	1	0	0	1	6	9	1	3	0	0	7	9	0	1	1	5	62	40	120	113
Woodford		8	11	0	0	0	0	7	13	14	8	3	1	5	2	1	0	9	2	1	0	0	0	2	7	0	0	0	4	3	7	1	1	1	78	64	140	113	
Yelvertoft		14	16	0	0	0	0	23	18	19	10	2	0	2	1	2	0	4	1	0	1	0	0	4	7	0	1	0	0	24	37	2	2	6	9	29	20	131	123
Total		431	490	42	94	11	30	469	592	506	541	99	118	199	190	43	41	313	164	9	9	34	23	189	218	114	184	17	38	375	473	77	78	122	179	2281	1838	5331	5300