

# Review Polling place / polling station - checklist



Part A – Current polling place details	
Polling place name	The Orangery, Kelmarsh Hall The Learning and Activity Centre, Kelmarsh Hall
Polling place address	Kelmarsh Northampton NN6 9LY
Building availability for future elections/ referendums	Yes Yes

Polling place review		
Check	✓	Comment
• Are there suitable transport links?	yes	X7 Bus and car parking access
• Are there any access issues regarding main/busy roads, railways, rivers, etc.?	No	
• Is the polling place capable of accommodating more than one polling station together with the necessary staff and equipment?	Potentially (used for booked events)	Orangery capacity – 40 persons L&A Centre capacity – 50 persons
• If so, could it accommodate all allocated voters going in and out of the polling stations, even where there is a high turnout?		Depends on numbers – refer to above.
• Is the building readily available in the event of any unscheduled elections?	Potentially (used for booked events)	
• Is there any possibility that the building may be demolished as part of a new development?	No	

Part B – External areas access and facilities		
Check	(√)	Comments
<ul style="list-style-type: none"> <li>Are there good public transport links to the polling place?</li> </ul>	Yes	X7 Bus
<ul style="list-style-type: none"> <li>Is the approach to the building safe and free from obstructions and does it have a dropped kerb?</li> </ul>	Yes	
<ul style="list-style-type: none"> <li>Is the building clearly identifiable?</li> </ul>	Yes	Use overflow carpark and main carpark and follow sign to Orangery
<ul style="list-style-type: none"> <li>Is additional signage required between street and entrance?</li> </ul>	Yes	To make it clear to voters
<ul style="list-style-type: none"> <li>Is there the facility to put up the required signage for polling day?</li> </ul>	Yes	On grass area adjacent to gates
<ul style="list-style-type: none"> <li>Are there parking facilities for disabled people?</li> </ul>	Yes	
<ul style="list-style-type: none"> <li>Are there parking facilities for polling staff?</li> </ul>	Yes	
<ul style="list-style-type: none"> <li>Does the approach to the building have external lighting?</li> </ul>	Yes	
<ul style="list-style-type: none"> <li>Does the building have level access? Yes/No. If no – <ul style="list-style-type: none"> <li>Has a purpose built ramp been installed?</li> <li>If so, does it have a handrail?</li> <li>Does the ramp have a gentle slope?</li> <li>Is there an alternative disabled access?</li> </ul> </li> </ul>	Yes	External ramp not required as the site is fully accessible via flat and level paving for disabled access.  The Orangery has additional rear access with steps – there is a handrail.
<ul style="list-style-type: none"> <li>Is the entrance door wide enough for a disabled person using a motorised wheelchair?</li> </ul>	Yes	L&A depending upon width of chair – standard door size for access internally. Orangery has double front doors
<ul style="list-style-type: none"> <li>Are the doors light enough for frail/elderly voters to open?</li> </ul>	Yes	
<ul style="list-style-type: none"> <li>Can the 'Guidance for voters' notice be clearly displayed outside the premises, as required by the election rules?</li> </ul>	Yes	
<ul style="list-style-type: none"> <li>Are there any external security concerns?</li> </ul>	No	
<ul style="list-style-type: none"> <li>Can tellers be accommodated outside the building?</li> </ul>	Yes	L&A – separate kitchen area may be used and kept locked – this would reduce access to toilets but there is a disabled facility available after usual office hours.
	No	Orangery

# External plan – B1

Show external layout, street name(s), car parking (including disabled car parking), ramps, steps, lighting, appropriate places for signage, etc.

*Sketch layout; provide photographs if appropriate.*



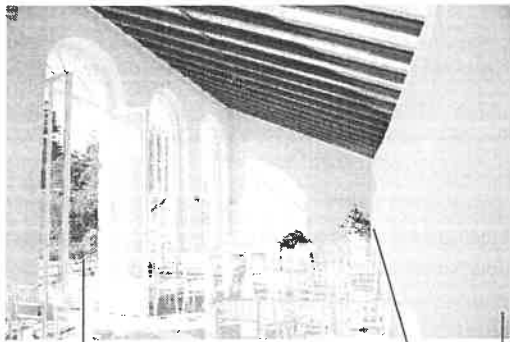
Learning and Activity Centre & Stable Yard  
disabled Parking

Voter Entrance to L&A

Disabled Parking for Orangery and L&A

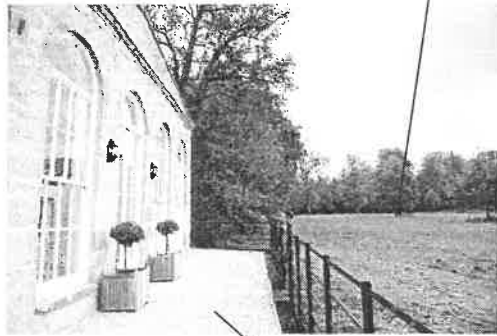
Teller's entrance and kitchenette

The Orangery



Front access and Disabled

Rear access x 2, via steps with hand rail



Overflow Carpark for staff and voters

Paved access to front of Orangery

Part C – Internal areas access and facilities		
Check	(√)	Comments
• Are all doors easy to open (including by wheelchair users) or do they need to be permanently locked back?	Yes	
• Are there any internal steps or obstructions/hazards?	No	
• Are any doormats level with the floor?	No	
• Is the floor covering non-slip (including in wet weather)?	Yes	
• Are there any corridors that may cause access problems?	Potentially	L&A internal doors may be too narrow for a wider chair
• Is there adequate lighting in the corridors?	Yes	
• Are there toilet facilities?	Yes	
• Is there a kitchen that staff can use?	Yes	L&A
	No	Orangery
• Is there adequate space for signage?	Yes	
• How many polling stations can the building accommodate?		Depends on the size of each
• Does the building have a telephone available (land line) in the event of mobile network problems?	No	

## Internal access leading to polling station(s) – C1

Show internal areas of the building, excluding the actual polling station where voting will take place, including corridors that link to the polling station, kitchen and toilets, and highlight any possible signage requirements and potential hazards. Also indicate door swing direction and ease of opening, any areas of poor lighting, and any areas of uneven floor, etc.

**Sketch layout; provide photographs if appropriate.**

See above for internal photo of Orangery.



L&A centre internal space and voters' access door.

## Part D – The polling station(s)

Check	(√)	Comments
<ul style="list-style-type: none"> <li>Is there sufficient space to accommodate and manage the flow of a high volume of electors in the case of a high turnout of electors?</li> </ul>	Yes	See capacity above
<ul style="list-style-type: none"> <li>If multiple polling stations need to be provided, are there other rooms available, or can the space be clearly divided to provide adequate room for more than one polling station?</li> </ul>		See above
<ul style="list-style-type: none"> <li>Is there sufficient space inside the polling station to comfortably accommodate staff, voters, polling agents and observers?</li> </ul>		See above
<ul style="list-style-type: none"> <li>Could ballot booths be positioned in a way that would preserve the secrecy of the ballot, even where there may be a high volume of electors?</li> </ul>		See above
<ul style="list-style-type: none"> <li>Is there adequate lighting for day and night time?</li> </ul>	Yes	
<ul style="list-style-type: none"> <li>Is there suitable furniture (tables and chairs) available for all types of election for polling staff and for those voters who may need to rest?</li> </ul>	Yes	
<ul style="list-style-type: none"> <li>Could motorised wheelchairs be accommodated?</li> </ul>		Depends upon size/width
<ul style="list-style-type: none"> <li>Can the official notices be clearly displayed, including the large-print version of the ballot paper(s)?</li> </ul>		See above
<ul style="list-style-type: none"> <li>Does the polling station have a sufficient heating system to accommodate staff from 6.30am to 10pm?</li> </ul>	Yes	
<ul style="list-style-type: none"> <li>Is there extra heating available if required (storage heaters)?</li> </ul>		Not required
<ul style="list-style-type: none"> <li>Are the heaters on a coin meter?</li> </ul>	No	
<ul style="list-style-type: none"> <li>If yes, please confirm which coin.</li> </ul>		